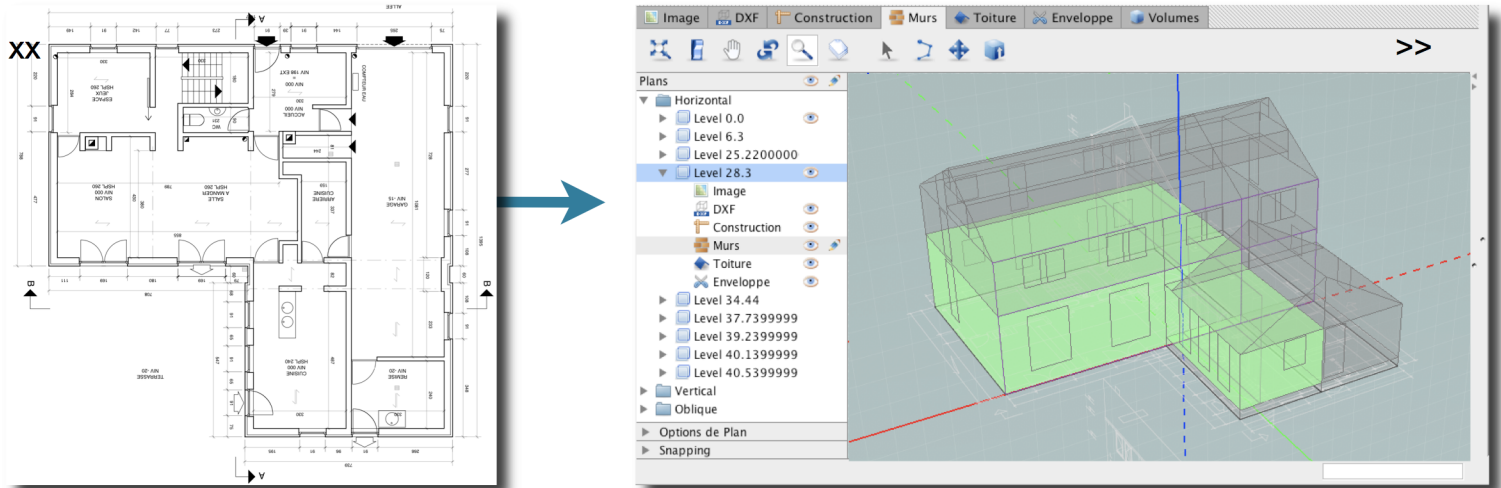


PEB : thermal oriented architectural modeling for building energy efficiency regulations

POSTER

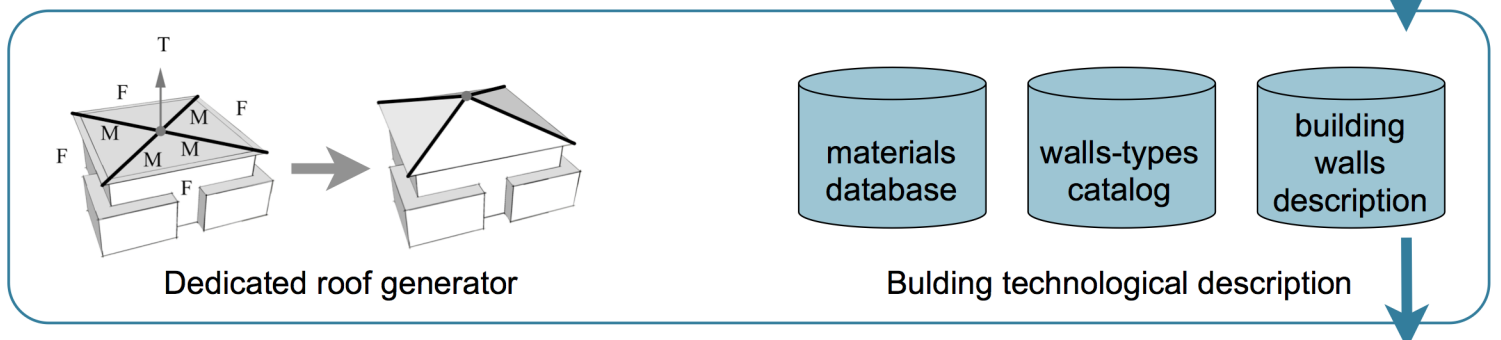
Pierre Leclercq, Roland Juchmes, Vincent Delfosse, Stéphane Safin, Arnaud Dawans, Adrien Dawans - LUCID, University of Liège, Belgium

From architectural plans to performance assessment



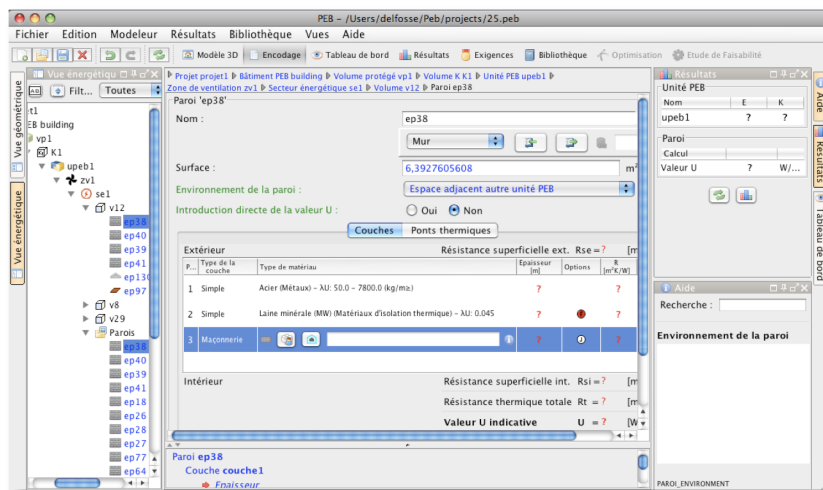
Input : 2D plans

3D modeling and thermal zones description

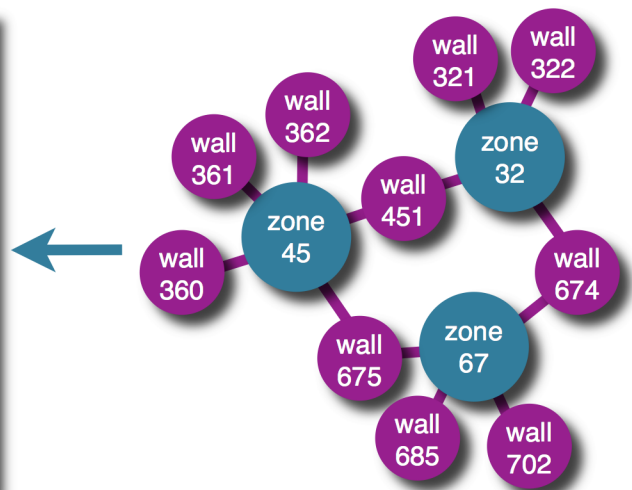


Dedicated roof generator

Building technological description



Building energy performance assessment



Building topological model